



priced from \$738,446

Upgraded elevation pictured  
Images for illustration only

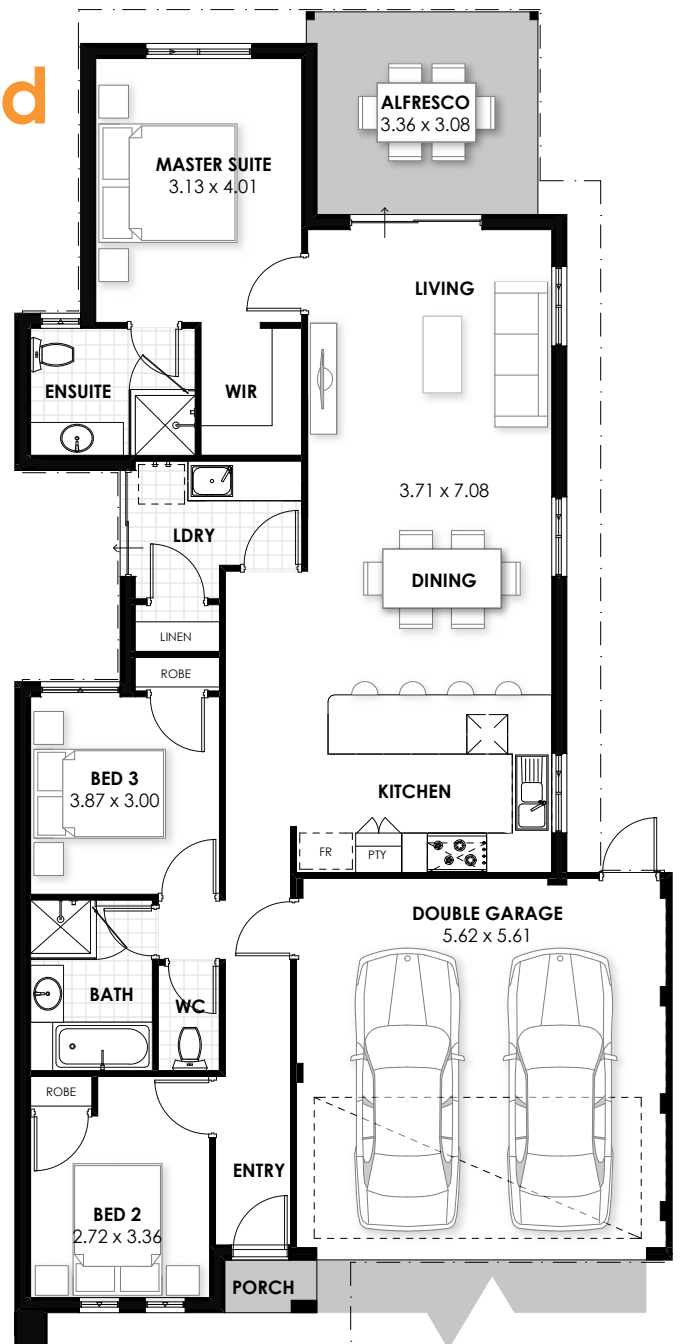
## 3, 5 & 5a Gladstone Road Rivervale

- choice of colorbond or tiled roof
- Fisher & Paykel 900mm appliances
- LED lighting to every room
- custom WA made kitchens with stone benchtops
- crossover, soakwells and paving
- chrome or black matte taps
- 12 month maintenance period



THE CEBU  
3 BED | 2 BATH | 2 CAR

CATHERINE BURKE  
0400 828 377



As Move Homes is not the owner of the land, pricing and availability of the house and land package may change without notice. This includes but is not limited to provisional sitework costs, estate guidelines and council approvals. Images for illustration only. Visit our website for Terms & Conditions.