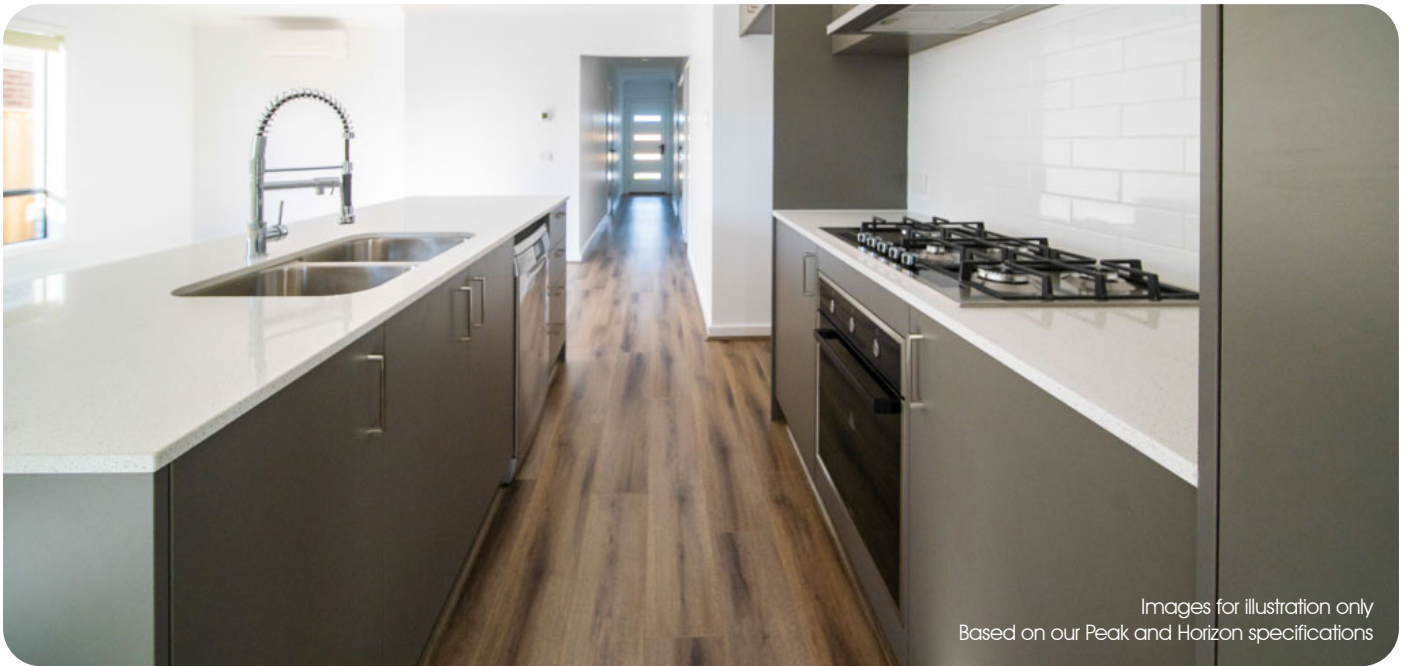


The Kennedy



Images for illustration only
Based on our Peak and Horizon specifications

Suits 12.5 x 25m

House	116m ²	12.5sq
Garage	37m ²	4.0sq
Alfresco	10m ²	1.1sq
Porch	3m ²	0.3sq
Total	166m²	17.8sq

- Quality pine wall framing
- High ceilings throughout
- Internal wall painting
- 900mm kitchen appliances
- Overhead kitchen cupboards
- Chrome, black or nickel taps
- 3kW PV solar electric system

